



PHILLIPS STEEL



TABLE OF CONTENTS

02

HISTORY

03

TEAM

04

PRODUCTS

05

COMPLIANCE

06

QUALITY

08

MACHINERY

09

MATERIAL

- 1915: ESTABLISHED AS A SCRAP METAL AND RECYCLING FACILITY
- 1975: TRANSITIONED TO SUPPLYING NEW MATERIALS
- 2000: STARTED SELLING INDUSTRIAL TOOLS AND SAFETY EQUIPMENT
- 2005: BEGAN OUR FABRICATION DIVISION
- 2014: RECEIVED LA CITY CERTIFIED LICENSE
- 2017: OPENED SECOND FACILITY APPROX 40,000 SQFT
- CURRENT: 1,200 TONS PER YEAR AND OVER TEN THOUSAND SKUs

THE HISTORY





PHILLIPS STEEL



SARA PHILLIPS
PRESIDENT



DAVID "OLDER" BRAYTON
DIRECTOR OF OPERATIONS



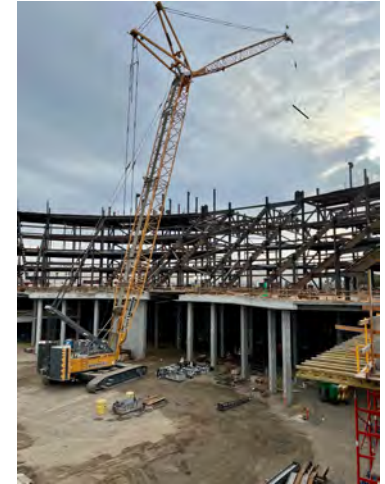
DAVID "YOUNGER" BRAYTON
ESTIMATING MANAGER / CWI



JOHN CABANSAG
LEAD PROJECT COORDINATOR

PRODUCTS

- Steel Structures:
 - Columns
 - Beams
 - Braces
- Trusses (Bolted and Welded)
- Pipe Racks & Supports
- Stairs, Handrails & Ladders
- Access Platforms
- Grating
- Vessel Platforms
- Vessel Lifting Lugs & Repads
- Marine Fairleads
- Miscellaneous Configurations:
 - Anchor Bolts
 - Embeds



PETROCHEMICAL | INDUSTRIAL | POWER PLANTS | WATER PUMPING & TREATMENT |
HOSPITALS (HCAI COMPLIANT) | SCHOOLS (DSA COMPLIANT)



- AISC 303
- AISC 360
- AISC 341, Seismic when requested

COMPLIANCE



- Material Grades



- D1.1
- D1.8, Seismic when requested
- D1.2, D1.3, D1.6

QUALITY ASSURANCE & CONTROL

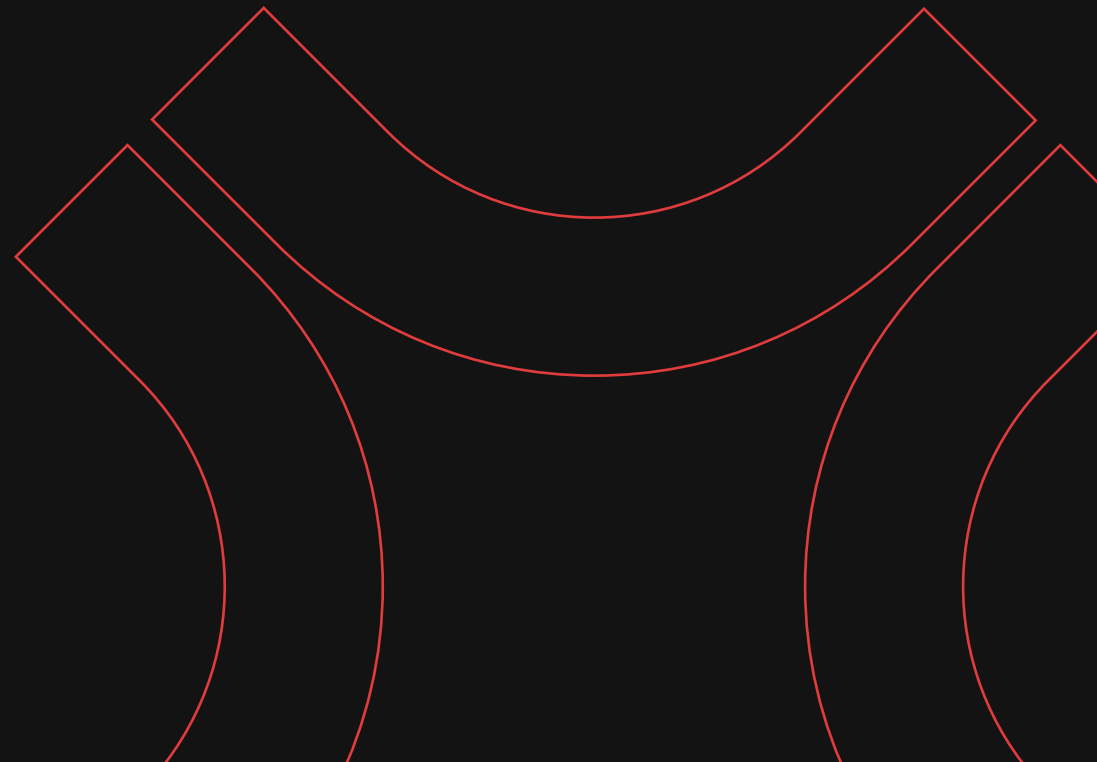
- Los Angeles LADBS approved Inspectors on staff
- Certified Weld Inspector on staff
- Internal testing of welders
- Internal creation of welding procedures
- Fully documented quality control procedures and inspections
- All projects 100% individually inspected visually and dimensionally





- Kinetic High Def Plasma and Flame Cutting Systems
- MC Machinery Waterjet
- HE&M Automatic Horizontal Bandsaws
- Cincinnati Hydraulic Shears
- Ercolina Rolling and Bender Machines
- Accupress Press Brakes

MACHINERY



MATERIALS & FINISH

- Carbon
- High Strength Steel
 - Aluminum
 - Stainless



- Hot Dip Galvanize per ASTM A123
- High Performance Primer
- Safety Yellow and Striping
- Stainless Steel Pickle and Passivation
- Sandblast







**PHILLIPS
STEEL**

Timely Solutions | Years of Results